

ANNUAL REVIEW MEETING
October 15-16, 2007

The 2007 Annual Review meeting of the Comparative Sedimentology Laboratory in Miami is scheduled for October 15th & 16th. You should arrive in Miami by the evening of October 14th. We have reserved a block of rooms for the nights of October 14th & 15th at the University of Miami rate of \$145.00 at the:

Sonesta Hotel & Suites Coconut Grove
2889 McFarlane Rd, Coconut Grove

We have only reserved a block of rooms – YOU MUST CALL TO MAKE YOUR OWN RESERVATION. Please call one of the following phone numbers: ***Hotel Direct: (305) 529-2828/Toll Free: 1-800-SONESTA or confirm reservation requests online, www.sonesta.com/coconutgrove. Each guest must identify themselves online as part of your group by providing the Group Identification Code. Please identify yourself as an attendee of the “University of Miami - Marine Geology & Geophysics”. The deadline for making your reservation is Tuesday, September 25, 2007.*** As of September 25th, all room nights, which have not been reserved will be returned to the hotel’s general inventory and will be accepted on a space and rate available basis.

There will be a daily service fee of \$5.00 per person, per night, which includes: hotel housemaid and bellman services. This fee is separate and distinct from the room rate and taxes. Accommodations will be available at 3:00 pm on arrival day and reserved until 11:00 am on departure day.

The meeting will begin at 8:30 AM on the morning of October 15th in the seminar room at the University of Miami’s Rosenstiel School of Marine & Atmospheric Science (RSMAS), 4600 Rickenbacker Causeway. The seminar room is in the Science/Administration Bldg., Rm. 103. We will provide transportation to the school; please meet in the lobby of the Hotel at 8:00 AM.

On Tuesday, October 16th the meeting will start at 8.00 am and be finished by 11:00 AM and field trip participants will leave for the airport to the field trip to the Dominican Republic, October 16-20, 2007

FIELD TRIP TO THE DOMINICAN REPUBLIC
October 16-20, 2007

We will go to Cibao Valley in the Dominican Republic. The field trip is called **“Stratigraphy and Depositional Facies of a Mixed Carbonate-Siliciclastic Marginal Shelf: Miocene- Pliocene, Cibao Valley, Dominican Republic”**.

Trip Objective: To examine the extensive and well developed carbonate lithofacies within a siliciclastic-dominated, tectonic, marginal marine basin in the Cibao Basin of the northern D.R.

Itinerary: Please see attached flyer for more information.

The cost of the field trip is \$2,400.00. It includes ground transportation, hotel, food and guidebook but you will be responsible for payment of your own airfare.

You will need to make your own flight reservations.

We will be **flying into Puerto Plata but fly out of Santiago** because there are very limited flight options to this part of the Dominican Republic. Please make the following flight information as soon as possible:

Tuesday, October 16th book on American Airlines flight **AA #979 that leaves Miami at 1.35 pm** and arrives in Puerto Plata (POP) at 3:35 pm. The return flight to Miami on October 20th is **AA #738 that leaves Santiago (STI) at 8.15 am** arriving in Miami at 10 20 am.

We are limited to about 20 people due to hotel availability. Thus, please let us know as soon as possible how many participants from your company will join us on the field trip.

Please send the names and email addresses as soon as possible to Gregor Eberli or Don McNeill (geberli@rsmas.miami.edu dmcneill@rsmas.miami.edu) of those who will participate in either the meeting and/or the field trip.

2007 Comparative Sedimentology Laboratory Annual Review Meeting Fieldtrip

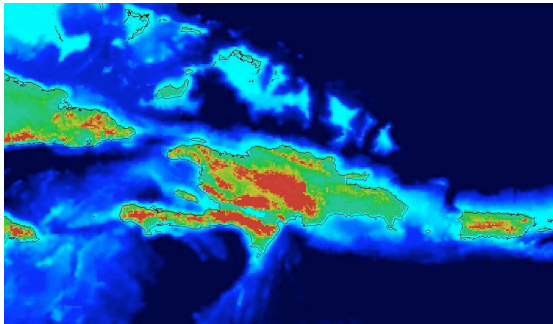
Stratigraphy and Depositional Facies of a Mixed Carbonate-Siliciclastic Marginal Shelf: Miocene-Pliocene, Cibao Valley, Dominican Republic



October 16 to 20, 2007

Fieldtrip Leaders: Dr. Don McNeill, Dr. Jim Klaus, Dr. Gregor Eberli

Trip Objective: To examine the extensive and well developed carbonate lithofacies within a siliciclastic-dominated, tectonic, marginal marine basin in the Cibao Basin of the northern D.R.



Costs: \$2,400.- includes ground transportation, meals, hotel and guidebook.

Flight: Please make your own reservation: Oct 16: Miami to Puerto Plata (POP) on AA #979 leaving Miami at 1.35 pm
Oct. 20: Santiago (STI) to Miami on AA #738 leaving Santiago at 8.15 am.

Schedule: We will depart Miami Tuesday afternoon Oct. 16 and fly to Puerto Plata, D.R. We will drive to Valverde Mao where we will stay at the Agua Azul Hotel for 3 nights. October 17, 18, and 19 fieldwork. We will drive to Santiago on the afternoon of Oct. 19th and catch the early return flight on Oct. 20th.

Field Itinerary and Key Stops

Field Day 1: Rio Gurabo, late Miocene and early Pliocene transition from reef shelf

deposits to cyclic bedded, coral limestone deposits, to deeper shelf deposits of the early Pliocene marine transgression.

Field Day 2: Rio Cana, Canada Zamba, early & middle Pliocene stratigraphic evolution from the early Pliocene transgression, to fluvial-deltaic lowstand clastics, to progradational marine carbonates

Field Day 3: Arroyo Bellaco, late Miocene reef development on a siliciclastic shelf, and subsequent diagenesis of the limestone.

This fieldtrip includes fairly strenuous walks in rubble-floored creeks and small rivers. Hiking will include wet feet, with possible wading up to your waist depending on the height of the river.

There is only ONE hotel in Mao and the accommodations are SIMPLE. All participants will have single rooms. The rooms have AC and cable TV, but hot water is not always available.



This trip is limited to 16 participants. Please make reservations to Don McNeill (dmcneill@rsmas.miami.edu) before September 10, 2007